

MEETING MINUTES

Groundwater Sustainability Agency for the Eastern Management Area in the Santa Ynez River Groundwater Basin August 27, 2020

A regular meeting of the Groundwater Sustainability Agency (GSA) for the Eastern Management Area (EMA) in the Santa Ynez River Groundwater Basin was held on Thursday, August 27, 2020. As a result of the COVID-19 emergency and Governor Newsom's Executive Orders to protect public health by issuing shelter-in-home standards, limiting public gatherings, and requiring social distancing, this meeting occurred solely via teleconference as authorized by and in furtherance of Executive Order Nos. N-29-20 and N-33-20.

EMA GSA Committee Members Present: Meighan Diethofer (Acting as Alternate), Brad Joos, Brett Marymee, Karen Waite

Alternate GSA Committee Member Present: Cynthia Allen

Member Agency Staff Present: Bill Buelow, Paeter Garcia, Eric Tambini, Amber Thompson, Matt van der Linden, Matt Young

Others Present: Jose Acosta, Jeff Barry (GSI Water Solutions), Brian Bondy, Mike Burchardi, Tim Gorham, Mary Heyden, Gaye Infanti, CJ Jackson, Curtis Lawler (Stetson Engineers), Jim McCord, Tim Nicely (GSI Water Solutions), Anna Olsen, Anita Regmi (DWR)

I. Call to Order and Roll Call

GSA Committee Member Marymee called the meeting to order at 6:31 p.m. and asked Mr. Buelow to call roll. Three GSA Committee Members were present and GSA Committee Member Diethofer acted as Alternate for Supervisor Hartmann.

II. Introductions and Review of SGMA in Santa Ynez River Valley Basin

Mr. Buelow announced names of phone attendees.

Mr. Buelow reviewed history of the Sustainable Groundwater Management Act (SGMA) requirements and what has been completed so far in the Santa Ynez River Basin including the creation of the three Groundwater Sustainability Agencies (GSAs) in the Basin (CMA, EMA, WMA), securing Department of Water Resources (DWR) Prop. 1 Grant (Grant) funding, hiring Consultants, coordinating efforts between the eight agencies participating in the three GSAs, and establishing a Citizen Advisory Group (CAG) in each of the Management Areas of the Basin.

III. Additions or Deletions, if any, to the Agenda

No additions or deletions were made. A request to change order to move Item XII before Item IV was approved.

IV. Public Comment

Mr. Bill Buelow introduced correspondence received on July 31, 2020 from the Santa Ynez Water Group referred to under Item XII of the agenda. The group is currently comprised of over 47 landowners representing thousands of acres located in all three management areas of the Basin. Discussion followed.

Mr. Buelow read an email received for Public Comment he received from Mr. Kevin Merrill regarding the Santa Ynez Water Group.

CJ Jackson, speaking as a member of the public not of EMA GSA CAG, stated he has property located in one management area and an area outside of the Basin and asked if SGMA has policies and procedures to deal with properties located in multiple management areas. Mr. Buelow clarified that DWR provides guidance regarding split parcels since Basins are based on geologic and scientific based boundaries not on parcel lines.

Mr. Brian Bondy spoke on behalf of the Santa Ynez Water Group. The Group was created to educate landowners on SGMA technical and policy issues, engage with GSA Directors and Member Agency staff and leverage GSA outreach to landowners in the Basin. The group has grown since the letter was sent and now currently represents landowners of over 10,000 acres.

Discussion followed.

V. Review and Consider Approval of Minutes

GSA Committee Member Marymee submitted the minutes of the meeting of May 21, 2020 for GSA Committee approval.

GSA Committee Member Joos made a MOTION to approve the minutes of May 21, 2020 as presented. GSA Committee Member Waite seconded the motion and it passed unanimously by Roll Call vote.

VI. Receive EMA GSA financial update and approve EMA Warrant Lists

The GSA Committee reviewed the financial reports of FY 2019-20 Periods 10 through 12 (through June 30, 2020) and the Warrant Lists for April, May, June and July 2020 for GSA Committee review.

Discussion followed. GSA Committee Member Joos requested staff provide, as part of the financial update each meeting, an accounting of Prop 1 Grant funds spent toward EMA GSA efforts and provide a balance of allocated grant funds remaining.

GSA Committee Member Joos made a MOTION to approve the April, May, June and July 2020 Warrant Lists and financial reports as presented (Nos. 1008 – 1016) totaling \$32,577.22. GSA Committee Member Diethofer seconded the motion and it passed unanimously by Roll Call vote.

VII. Receive Update and Memo from EMA Citizen Advisory Group

Mr. CJ Jackson presented a Memorandum dated August 27, 2020 and gave an update on the EMA Citizen Advisory Group (CAG) activities. The EMA CAG met on June 2, 2020 via teleconference to review the first SGMA newsletter. The EMA CAG continues to strongly endorse a pathway to engagement by and for stakeholders and advocate for workshops and press releases to enhance stakeholder participation.

Discussion followed. There was no public comment.

VIII. Receive Staff Memo and Overview on Adjustments to Management Area Boundaries

Mr. Buelow presented a Memorandum dated August 2020 regarding Management Area Boundary Modifications. He explained the slight shift in internal boundaries.

The CMA-EMA proposed internal boundary change was based on a request from the City of Solvang and a further analysis of parcel boundaries and hydrogeologic information. The revised boundary does not split any parcels and follows a topographic and geologic break at the base of Skytt Mesa.

The proposed change to the CMA-WMA boundary is based on an analysis of the hydrologic and hydrogeologic data by Stetson Engineers. It aligns the Management Area boundary with surface water drainage, the local topography and hydrogeology; encloses a large portion of the Careaga formation within the CMA, which aids in calculations for the water budget; aligns the boundary to the SYRWCD boundary in the Santa Rita and Buellton uplands; shortens the boundary between the WMA and CMA which will simplify water budget calculations; and moves the boundary at the Santa Ynez River nearer to a former USGS gauge location and a bedrock high. The new boundary is less arbitrary and will make the calculation of groundwater and surface water flux between the CMA and WMA easier to quantify.

He further clarified that all parcels included in these internal boundary changes were previously part of a GSA in this Basin. No additional land is subject to SGMA as a result of the changes therefore it is not considered a material change by DWR.

There were no questions or comments.

GSA Committee Member Waite made a MOTION to endorse the proposed boundary changes as presented. GSA Committee Member Dietenhofer seconded the motion and it passed unanimously by Roll Call vote.

IX. Receive update on GSP activities in the EMA and Basin

Mr. Tim Nicely and Mr. Jeff Barry (GSI Water Solutions) presented an update on the consultants GSP activities in the EMA GSA since the last GSA Committee meeting in May 2020, a SGMA and GSA overview, GSP timeline and milestones and consultant team progress. The presentation also provided a review of the Data Management System, Hydrogeologic Conceptual Model, Water Budget, Groundwater Flow Model, and Field Data Collection. The consultants reviewed newly initiated work, ongoing activities and the next steps to create a SGMA compliant GSP for the EMA GSA.

There was public comment, GSA Committee Member, consultant and staff discussion following the presentation.

- Tim Gorham asked about availability of data to the consultant team. Mr. Barry advised there is a large amount of available historical data in the Basin but getting recent information on pumping data and tests is the challenge. Mr. Nicely added that there seems to be a lack of historical land use data which consultants are working to gather.
- GSA Committee Member Marymee asked about data compilation to be received from the SkyTEM survey. Mr. Barry explained procedure and timing.
- Mr. Brian Bondy, Santa Ynez Water Group, expressed concern that the number of planned meetings seems too low particularly in 2021 and encourages committee to consider as much opportunity as possible for public input regarding Sustainability Plan Pyramid.
- Mr. Bondy asked how and when the underlying information of the Data Management System be made available to stakeholders. Mr. Buelow said that staff will address this request with consultants and provide an answer at a future meeting.

X. Direct Staff to Proceed with Contracting GSI Water Solutions to Prepare a Groundwater Sustainability Plan on Behalf of the EMA GSA Through the Santa Ynez River Water Conservation District

Mr. Buelow explained that the Scope of Work for GSI Water Solutions contracted by Santa Barbara County Water Agency (County) on behalf of the EMA GSA does not include developing the actual GSP document. He clarified that the contract between the County and GSI includes creating Technical Memoranda as well as the data collection and calculations required to create those memoranda and is paid for by the County. Technical Memoranda can be used as chapters of the GSP to save on final costs. The Scope of Work and Cost Estimate from GSI Water Solution is currently being developed. Prop 1 Grant Reimbursement Funds is expected to pay the costs to create the GSP document for the EMA GSA. If any excess funds are required, it will need to be split between Santa Ynez River Water Conservation District, City of Solvang and the Santa Ynez River Water Conservation District, Improvement District No. 1.

Discussion followed.

GSA Committee Member Marymee made a MOTION to direct staff to proceed with contracting GSI Water Solutions to prepare a Groundwater Sustainability Plan on behalf of the EMA GSA through the Santa Ynez River Water Conservation District. GSA Committee Member Waite seconded the motion and it passed by Roll Call vote, weighted voting (9-2). Ayes: GSA Committee Members Marymee, Waite, and Diethofer. Noes: GSA Committee Member Joos.

XI. Receive update Aerial Electro-Magnetic Survey of EMA

Mr. Buelow announced that SkyTEM survey of the EMA, CMA and WMA has been delayed due to COVID-19 travel restrictions as the crew is based out of Ontario, Canada. They are now allowed entry to the US and are beginning their work again. Staff is in communication with SkyTEM and are waiting for a firm date for operations. The survey will possibly occur in late September or October. Staff will proceed with public awareness campaigns including press releases, email blasts and physical mailer after the flight dates are confirmed.

Discussion followed.

XII. Received Correspondence

Correspondence received from the Santa Ynez Water Group was introduced and discussed during Public Comment.

XIII. Next EMA GSA Meeting: Thursday, November 19, 2020, 6:30 PM, location TBD

GSA Committee Member Marymee announced that the next EMA GSA Committee Meeting will be Thursday, November 19, 2020, 6:30 PM, location TBD. Due to COVID-19 restrictions, it may be held via teleconference call.

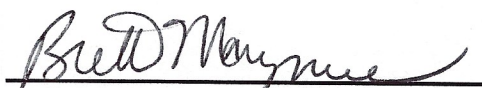
XIV. EMA GSA Committee requests and comments


GSA Committee Member Waite announced November 19, 2020 may or may not be her last meeting as an EMA GSA Committee Member, depending on the results of the upcoming election.

GSA Committee Member Marymee expressed interest in the Paso Robles SGMA efforts and would like information on how to join one of their meetings. Mr. Barry will give Paso Robles SGMA meeting information to Mr. Buelow who will forward to all Committee Members/Directors of EMA, CMA and WMA GSA Committees.

XV. Adjournment

There being no further business, GSA Committee Member Waite made a MOTION to adjourn the meeting at 8:46 PM. GSA Committee Member Dietenhofer seconded and the motion passed unanimously.


Brett Marymee, Chairman


William J. Buelow, Secretary

**GROUNDWATER SUSTAINABILITY AGENCY FOR THE EASTERN MANAGEMENT AREA (EMA)
IN THE SANTA YNEZ RIVER VALLEY GROUNDWATER BASIN**

APRIL 2020 WARRANT LIST FOR COMMITTEE APPROVAL

| <u>NUMBER</u> | <u>DATE</u> | <u>PAYEE</u> | <u>DESCRIPTION</u> | <u>AMOUNT</u> |
|--------------------|-------------|--|--|--------------------|
| 1008 | 04/08/20 | Santa Ynez River Water Conservation District | 1/3 of GSA Member Agency Account Tracking setup & GoDaddy "SantaYnezWater.org" 1 year domain | \$ 228.73 |
| 1009 | 04/08/20 | Stetson Engineers | Stetson Engineers - February 2020 Engineering Service (Basin Coordination) | \$ 1,600.52 |
| 1010 | 04/08/20 | Valley Bookkeeping | FY 2019-20 3rd Quarter Bookkeeping (Jan., Feb., March 2020) | \$ 150.00 |
| MONTH TOTAL | | | | \$ 1,979.25 |

MAY 2020 WARRANT LIST FOR COMMITTEE APPROVAL

| <u>NUMBER</u> | <u>DATE</u> | <u>PAYEE</u> | <u>DESCRIPTION</u> | <u>AMOUNT</u> |
|--------------------|-------------|--------------|--------------------|---------------|
| | | NONE | | \$ - |
| MONTH TOTAL | | | | \$ - |

JUNE 2020 WARRANT LIST FOR COMMITTEE APPROVAL

| <u>NUMBER</u> | <u>DATE</u> | <u>PAYEE</u> | <u>DESCRIPTION</u> | <u>AMOUNT</u> |
|--------------------|-------------|-------------------|---|------------------|
| 1011 | 06/15/20 | Stetson Engineers | Stetson Engineers - April 2020 Engineering Service (Basin Coordination) | \$ 191.00 |
| MONTH TOTAL | | | | \$ 191.00 |

TOTAL THIS QUARTER: \$ 2,170.25

**GROUNDWATER SUSTAINABILITY AGENCY FOR THE EASTERN MANAGEMENT AREA (EMA)
IN THE SANTA YNEZ RIVER VALLEY GROUNDWATER BASIN**

JULY 2020 WARRANT LIST FOR COMMITTEE APPROVAL

| <u>NUMBER</u> | <u>DATE</u> | <u>PAYEE</u> | <u>DESCRIPTION</u> | <u>AMOUNT</u> |
|----------------------|-------------|--|--|---------------------|
| 1012 | 07/13/20 | City of Solvang | Prop 1. Grant Reimbursement of Member Agency Contribution Received in FY 19-20 | \$ 6,166.00 |
| 1013 | 07/13/20 | Stetson Engineers | Stetson Engineers - May 2020 Engineering Service (Basin Coordination) | \$ 2,081.75 |
| 1014 | 07/13/20 | SYRWCD, ID No. 1 | Prop 1. Grant Reimbursement of Member Agency Contribution Received in FY 19-20 | \$ 3,509.22 |
| 1015 | 07/13/20 | Santa Ynez River Water Conservation District | Prop 1. Grant Reimbursement of Member Agency Contribution Received in FY 19-20 | \$ 18,500.00 |
| 1016 | 07/13/20 | Valley Bookkeeping | FY 2019-20 4th Quarter Bookkeeping (April, May, June 2020) | \$ 150.00 |
| MONTH TOTAL * | | | | \$ 30,406.97 |
| | | | | * FY 19-20 |

EASTERN MANAGEENT AREA
CITIZEN ADVISORY GROUP
MEMORANDUM

DATE: August 27, 2020
TO: EMA GSA Committee
FROM: EMA Citizen Advisory Group
SUBJECT: CAG Comments on Draft Basin Newsletter

EMA CAG Members Present: Sam Cohen, Elizabeth Farnum, Tim Gorham, Mary Heyden, Gaye Infanti, CJ Jackson, and Kevin Merrill

The EMA CAG met via teleconference on June 2, 2020 and reviewed the first SGMA newsletter prepared for the entire Santa Ynez River Valley Groundwater Basin and made comment and suggested changes.

As in the past, the EMA GSA Committee strongly endorsed steps that would create a clear and understandable pathway to engagement by and for stakeholders. Suggestions were made by the CAG to reduce the level of detail and extraneous information in this first newsletter. The CAG believed this would allow stakeholders to locate their properties within the Basin's three management areas and make it easier for stakeholders to contact agency staff with questions. Overall, the CAG found the newsletter informative although at times a bit redundant. Some of the CAG's suggestions have been included within the revised edition of the newsletter.

The EMA CAG continues to advocate for workshops and press releases to enhance stakeholder participation. The CAG also suggests that further notifications be provided regarding the existence of the EMA CAG, but that contact and inquiries from the public should be facilitated through agency staff and not directly through the CAG members.

SANTA YNEZ RIVER VALLEY GROUNDWATER BASIN

Mailing Address: P.O. Box 719
Santa Ynez, CA 93460
Phone: (805) 693-1156

MEMORANDUM

DATE: August, 2020

TO: WMA, CMA and EMA GSA
Committees

FROM: GSA Agency Staff

SUBJECT: Management Area Boundary Modifications

Background

This memorandum describes proposed changes to the internal boundaries of the three management areas (MA) in the Santa Ynez River Valley Groundwater Basin¹ (SYRVGB). The proposed changes to the CMA-EMA boundary are based on a request from the City of Solvang and a further analysis of parcel boundaries and hydrogeologic information. The proposed changes to the CMA-WMA boundary are based on an analysis of the hydrologic and hydrogeologic data by Stetson.

The two consultant teams coordinated together on the proposed changes. Agency Staff from all eight agencies in the Basin reviewed the proposed boundary changes. As the Groundwater Sustainability Plans (GSP) and associated technical memoranda are currently being prepared, the timing of the proposed changes will allow the consultants to proceed with preparing the GSP figures with the new boundaries. The proposed changes are shown in Figures 1 and 2. No changes to the DWR Bulletin 118¹ basin boundaries are proposed herein. None of the proposed changes are considered “material changes” as defined by DWR. Table 1 below summarizes the

¹ The extents of the SYRVGB were determined by the Department of Water Resources in Bulletin 118 (“DWR”) and are based on regional geology studies. The SYRVGB is identified as California basin 3-15.

total acres of the SYRVGB and MAs based on original boundaries and proposed revised boundaries.

Table 1. Area Within Original and Revised Boundaries of the WMA, CMA and EMA (Acres)

| | Area within Original Boundaries (Acres) | Area within Revised Boundaries (Acres) | % change |
|--|--|---|-----------|
| Western Management Area (WMA) | 85,300 | 85,600 | 0% |
| Central Management Area (CMA) | 21,200 | 21,000 | 1% |
| Eastern Management Area (EMA) | 96,500 | 96,400 | 0% |
| Total Santa Ynez River Valley Groundwater Basin | 203,000 | 203,000 | 0% |

Proposed Change to CMA-EMA Internal Boundary

The proposed change to the CMA-EMA boundary adjusts the existing boundary between the CMA and EMA to align with parcel and hydrogeologic boundaries. This change is based on updated Santa Barbara County Assessor parcels maps. Additionally, the existing MA boundary split several parcels. The revised boundary does not split any parcels and follows a topographic and geologic break at the base of Skytt Mesa, on the western side of the City of Solvang. The new boundary coincides with the contact between several geologic units which will simplify water budget calculations. All parcels included in the boundary change were previously part of a GSA. No additional land is subject to the Sustainable Groundwater Management Act (SGMA) as a result of the boundary change, therefore not considered a material change by DWR. Figure 1 shows the original and draft proposed boundary between the CMA-EMA.

Proposed Change to WMA-CMA Internal Boundary

The proposed change to the WMA and CMA boundary is based on the following:

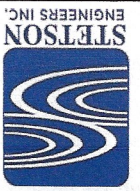
- 1) Aligns the MA boundary with the surface water drainage, the local topography and hydrogeology.
- 2) Encloses a large portion of the Careaga formation within the CMA, which aids in calculations for the water budget.

- 3) Aligns the WMA-CMA GSA boundary to the SYRWCD boundary in the Santa Rita and Buellton Uplands.
- 4) Shortens the boundary between the WMA-CMA, which will simplify water budget calculations.
- 5) Moves the MA boundary at the Santa Ynez River near to a former USGS gauge location (ID 11131000) and a bedrock high. The new boundary is less arbitrary than the previous boundary and will make the calculation of groundwater and surface water flux between the CMA and WMA easier to quantify.

Figure 2 shows the original and draft proposed boundary between the WMA-CMA. All parcels included in the boundary change were previously part of a GSA. No additional land is subject to the Sustainable Groundwater Management Act (SGMA) because of the proposed boundary change, and therefore not considered a material change by DWR.

Once the GSAs have concurred with the change, Staff will formerly update the Geographic Information System (GIS) files and upload the revised GIS files to DWRs SGMA Portal with a letter documenting the changes.

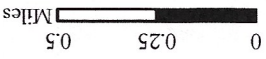
Staff recommendation: Staff recommends that the WMA, CMA and EMA GSAs endorse the proposed boundary changes.



DRAFT
7/31/2020

PROPOSED BOUNDARY ADJUSTMENTS CENTRAL AND EASTERN MANAGEMENT AREAS

Proposed adjusted boundary between CMA and EMA following geologic water-bearing formation boundary and parcels. No exterior DWR Bulletin 118 boundaries are changed.



- Approx. Santa Ynez River (NHD*)
- Original Management Area Boundary
- Central Management Area (CMA) Boundary
- Eastern Management Area (EMA) Boundary
- Proposed Management Area Boundary
- Central Management Area
- Eastern Management Area

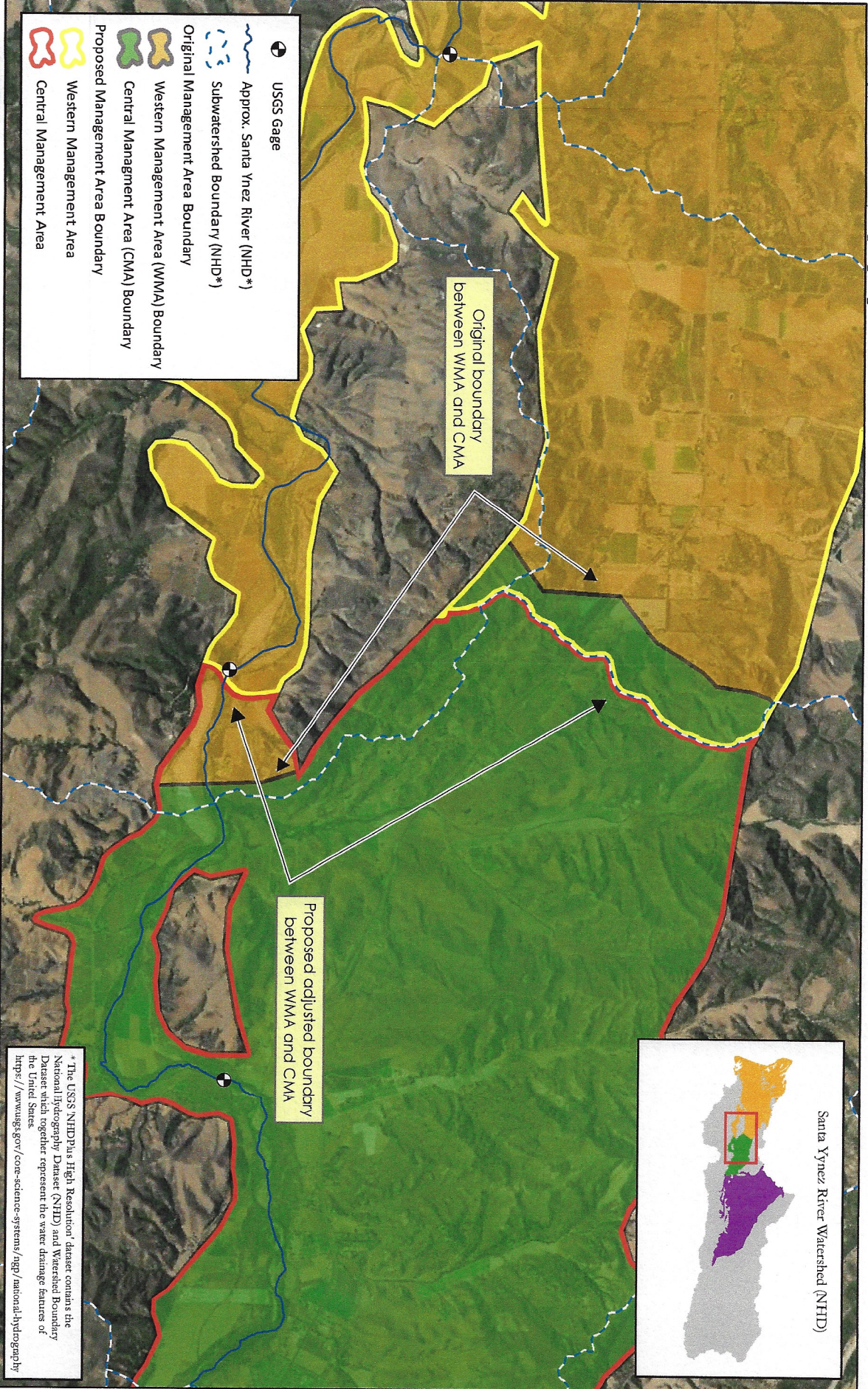
The USGS NHDPlus High Resolution dataset contains the National Hydrography Dataset (NHD) and Watershed Boundary Dataset which together represent the water drainage features of the United States.
<https://www.usgs.gov/core-science-systems/nrgp/national-hydrography>

Proposed adjusted boundary between CMA and EMA following geologic formation and parcel boundaries

Original boundary between CMA and EMA



FIGURE 1



**PROPOSED BOUNDARY ADJUSTMENTS
CENTRAL AND WESTERN MANAGEMENT AREAS**

DRAFT
7/31/2020



This map proposes that internal management area boundaries within the Santa Ynez River Groundwater Basin be redrawn to follow watershed boundaries more accurately and to utilize a historical USGS gage location; no exterior DWR Bulletin 118 boundaries are changed.

* The USGS NHDPlus High Resolution dataset contains the National Hydrography Dataset (NHD) and Watershed Boundary Dataset which together represent the water drainage features of the United States.
<https://www.usgs.gov/core-science-systems/nhd/national-hydrography>

FIGURE 2